

CARLSON TAKEOFF

- SOFTWARE THAT WORKS FOR YOU!

BETTER Reporting –

Direct PDF output for:

- Cut/Fill Volume Reports
- 3D Surface Models
- Surface Profiles
- Site Plan Views
- Cross-Sections

MORE Power –

User-Defined Area Breakdowns for both Material Quantities and Cut/Fill Volumes

Cut/Fill Volumes by specified Depth Ranges

Special Fills Areas

MORE Compatibility –

- Unbelievably fast Cross-Section conversion
- PDF and TIF File Import
- DGN File Import

Use Takeoff for Accurate Estimates

- Calculate site cut & fill and topsoil
- Differentiate strata volumes – rock vs. dirt
- Accurately determine asphalt quantity needed in a variety of measurement units
- Get precise curb work calculations
- Estimate trenching quantities
- Estimate roadways from cross-sections

Use Takeoff Once You Get the Bid

- Analyze existing TOPO before you start
- Prepare the design info for exact staking
- Create a 3D model for machine control
- Evaluate for quantity and quality control
- Report volumes as you build

“With Carlson Takeoff, we are able to raise our production levels and cut our grade foreman time in half. We’ve also saved on materials as we’re much better at controlling quantities.”

— Andy LePage, Owner/Foreman, SUR Construction, Rochester, N.H.



Newest Takeoff Features:

- **Advanced Strata Modeling** – Create strata surfaces from drillhole data by the linear least-squares or the inverse distance to the 2nd/3rd power methods for more accurate strata volumes.
- **Detailed Trenching Reports** – Get linear footage breakdown by pipe size, material and depth. Specify backfill from the top, bottom, and/or relative to top of pipe.
- **New Dynamic Elevating** – Elevate from contours and spot elevations at the same time.
- **Work with PDFs more easily** – PDF Import now recognizes text and colors for a faster PDF-to-Quantities workflow.

800-989-5028 or
www.carlsonsw.com

For more information or to locate a dealer near you



Carlson

...Works Simply ...Simply Works



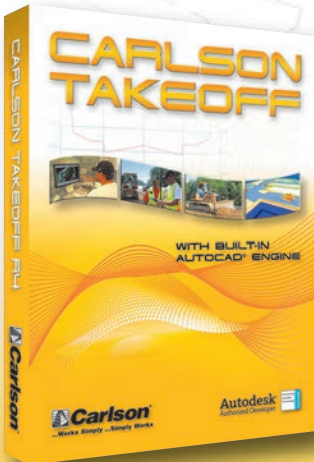
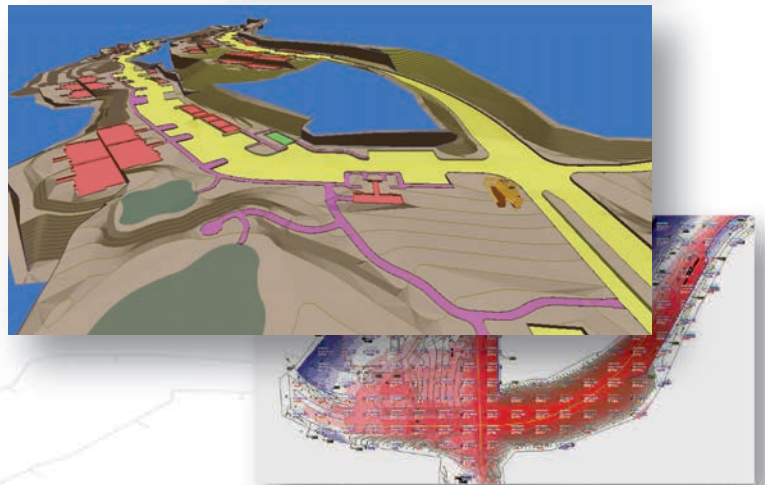
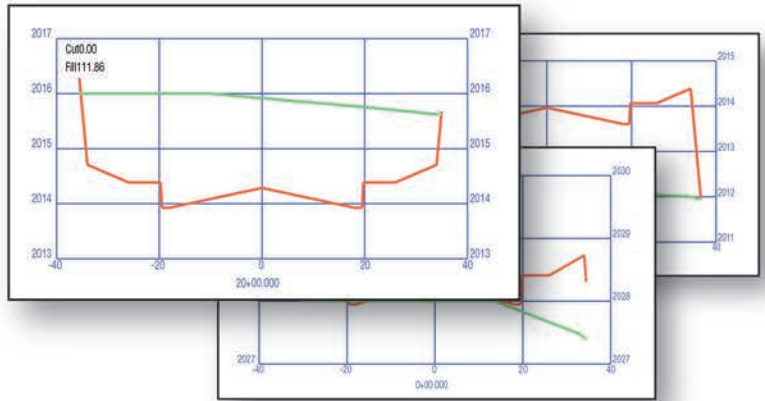
CARLSON TAKEOFF

- SAVE TIME, SAVE MONEY

Volumes Report

Project: the Road to Takeoff
 Initial Surface: C:\Documents and Settings\Todd Carlson\Desktop\June Demo\Road\the Road to Takeoff-ex.tin
 Final Surface: C:\Documents and Settings\Todd Carlson\Desktop\June Demo\Road\the Road to Takeoff-fn.tin

Bank	Swell/ Shrink	Adjusted Volume (CY)	Area (SqFt)	Average Depth	Change Per .1 FT	Import Volume (CY)
Topsoil Removal	0.0 1.000	0.0	0.0	0.00	0.00	0.0
Cut	6234.8 1.000	6234.8	151838.8	1.11	1658.2	
Fill	49174.7 1.000	49174.7	295839.0	4.49	1658.2	42939.9
Cut Depth Zones						
Depth	Cut (C.Y.)					
0 to 3	6066.1					
3 to 6	168.7					
Fill Depth Zones						
Depth	Cut (C.Y.)					
0 to 10	42720.0					
10 to 20	6362.0					
20 to 30	92.7					



Carlson Takeoff will work for you!

- Digitize Less! Get the ability to turn scanned paper plans into CAD linework.
- Send jobs straight to Topcon MC. Exports both .tn3 (surface models) and now .ln3 (linework) files.
- Work with "bad CAD" more easily. With more functions in Drawing Cleanup.
- Get more Info. Volume Reports include horizontal area and max cut/fill.
- See more. Improvements made to Cut/Fill Color Map and Contours.

Get the most complete and powerful site estimating and data prep software on the market with Carlson Takeoff

In addition to Digitizing paper plans, Carlson Takeoff offers critical Drawing Cleanup features and advanced 2D to 3D routines that streamline the estimating process from digital plans. It can input all data files, including .dwg, .dxf, DGN, PDF, TIFF, LandXML, and all formats of Centerline, Profiles, and Section Data. Takeoff calculates cut/fill material volumes and has 3D simulation as well as comprehensive reporting. In addition, roadwork, trenching, drill-holes, and sub-grades capabilities are all included for one affordable price.

800-989-5028 or
www.carlsonsw.com

For more information or to locate a dealer near you

Authorized
 IntelliCAD® Technology
 Consortium Member

Autodesk®
 Authorized Developer



Carlson®

...Works Simply ...Simply Works